

INFORMATION TECHNOLOGY

INDUSTRY OVERVIEW



Between 2011 and 2016, the IT sector in the Tampa market grew 6.9 percent – twice the overall job growth here.

With exponential growth in the industry, it's clear that Tampa Bay has quickly become a hub for IT companies of all shapes and sizes. And there are no signs of stopping this booming industry.

Our talent pipeline is fueled by major Florida universities, such as the University of South Florida. Institutions across the state offer dozens of IT-centric degree programs and curricula in high demand specializations, such as data science/big data and cybersecurity.

Hillsborough County has become a top destination for graduates with training in data warehousing, data scaling, data analytics, and data management. The region is also home to the Florida Center for Cybersecurity, a first-of-its-kind, shared resource for Florida's stakeholders in higher education, government, defense, and industry.

"Tampa is the perfect place for us to build Cohesion's future. The state and local government and the business community have been extremely supportive and made us feel welcome. The rich pool of IT consulting talent in this market will certainly help fuel our growth."

- JOHN OWENS,
PRESIDENT AND CEO,
COHESION

TAMPA BAY'S LEADING IT COMPANIES



Cognizant

RELIAQUEST



SunView
Software Inc.

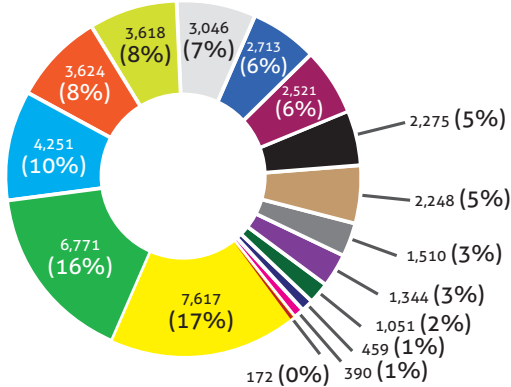
SYKES

Accusoft
AgileThought
Ashcomm LLC
Catalina Marketing
Cognizant
Cohesion

ConnectWise
Fintech
Nielsen
Nitro Solutions
ReliaQuest
SunView Software

Sykes Enterprises
Syniverse
Tech Data
Triad Retail Media
Tribridge
Vology

IT INDUSTRY SECTORS TOTAL 2017 JOBS



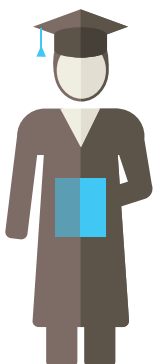
- Software Developers, Applications
- Computer User Support Specialists
- Computer Systems Analysts
- Network and Computer Systems Administrators
- Software Developers, System Software
- Computer Network Architects
- Computer Programmers
- Computer and Information Systems Managers
- Computer Occupations, All Other
- Computer Network Support Specialists
- Web Developers
- Database Administrators
- Information Security Analysts
- Computer Hardware Engineers
- Computer Operators
- Computer and Information Research Scientists

AVERAGE WAGE BY INFORMATION TECHNOLOGY OCCUPATION

SOC CODE	IT OCCUPATION	AVERAGE WAGE TAMPA MSA	U.S.
15-1132	Software Developers	\$89,700	\$104,300
15-1131	Computer Programmers	\$79,100	\$85,200
15-1151	Computer User Support Specialists	\$47,200	\$53,100
15-1121	Computer Systems Analysts	\$83,500	\$91,600
15-1143	Computer Network Architects	\$81,200	\$104,200
11-3021	Computer and Information Systems Manager	\$145,400	\$145,700
15-1142	Network and Computer Systems Administrators	\$80,100	\$84,500
15-1152	Computer Network Support Specialists	\$57,100	\$67,800
15-1199	Computer Occupations, All Other	\$78,300	\$88,900
17-2061	Computer Hardware Engineers	\$92,700	\$118,700
15-1111	Computer and Information Research Scientists	\$102,600	\$116,300
15-1122	Information Security Analysts	\$84,900	\$96,000
15-1134	Web Developers	\$64,300	\$72,200
15-1141	Database Administrators	\$85,500	\$87,100
43-9011	Computer Operators	\$37,700	\$43,900
15-1133	Software Developers, System Software	\$90,100	\$110,600

Source: JobsEQ®, 2017 Q2.

TOTAL FLORIDA DEGREES AWARDED BY LEVEL



Bachelor's
104,805

Post Graduate
43,210

Source: National Center for Education Statistics (NCES), 2014-2015

TAMPA MSA IT DATA

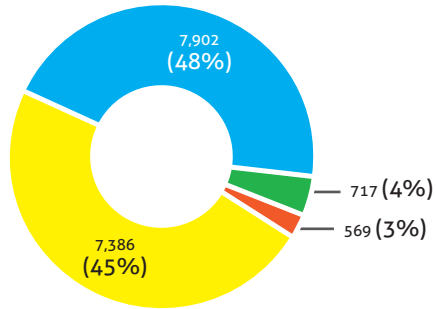
\$91,012 AVERAGE
ANNUAL WAGES

43,610 EMPLOYEES

1,885 COMPANIES

Source: JobsEQ®, 2016

IT INDUSTRY SECTORS TOTAL 2017 JOBS



- Custom Computer Programming Services
- Computer Systems Design Services
- Computer Facilities Management Services
- Other Computer Related Services

AVERAGE WAGE BY INFORMATION TECHNOLOGY SECTOR

NAICS CODE	SECTORS	AVERAGE WAGE TAMPA MSA	AVERAGE WAGE U.S.
541511	Custom Computer Programming Services	\$85,439	\$109,680
541512	Computer Systems Design Services	\$97,394	\$105,279
541513	Computer Facilities Management Services	\$86,724	\$89,038
541519	Other Computer Related Services	\$90,106	\$105,777
Average Annual Wages Per Worker		\$91,012	\$108,712

Source: JobsEQ®, 2017 Q2.

RESOURCES

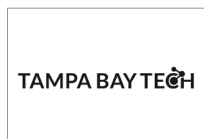


FLORIDA HIGH TECH CORRIDOR

www.floridahightech.com

Florida High Tech Corridor is a technology rich region with a

mission to grow high tech industry and innovation through partnerships that support research, marketing, workforce, and entrepreneurship. The Florida High Tech Corridor Council is an economic development initiative of three of the country's largest research institutions: University of South Florida, University of Central Florida, and University of Florida.



TAMPA BAY TECH

<https://tampabay.tech>

Established in 2000, Tampa Bay Tech (formerly known as the Tampa

Bay Technology Forum) is Florida's largest technology council dedicated to growing and promoting Tampa Bay's technology industry.



TAMPA BAY WAVE

www.tampabaywave.org

Tampa Bay Wave, Inc. is a 'by entrepreneurs, for entrepreneurs'

nonprofit helping entrepreneurs turn ideas into growing tech businesses in Tampa Bay.



USF CONNECT

www.research.usf.edu/rf/usf-connect.asp

USF CONNECT is the business and

economic development initiative of USF that provides support for technology start-ups, unites technology and talent with businesses throughout Central Florida, and offers professional amenities and resources for successful business development and technology commercialization.



FLORIDA CENTER FOR CYBERSECURITY (FC²)

www.usf.edu/cybersecurity

The first of its kind, FC² works to

position Florida as the national leader in cybersecurity and its related workforce through education, community engagement and innovative, interdisciplinary research.



!P: POTENTIAL UNLEASHED

www.tampainnovation.com

!P: Potential Unleashed is multi-

jurisdictional district anchored by

globally-recognized institutions such as University of South Florida (USF), Moffitt Cancer Center, and Florida Hospital that drive economic activity in the area, engaging tens of thousands of students and educators, health care workers and patients, and four million tourists annually.

DEMOGRAPHICS

TOTAL MSA POPULATION: **3M**
TOTAL MSA LABOR FORCE: **1.5M**
MEDIAN AGE: **37**
COLLEGE DEGREE HOLDERS: **31%**
COST OF LIVING INDEX: **91.5** (2016)

RANKINGS

#1 STATE FOR BEST BUSINESS CLIMATE
(BUSINESS FACILITIES, 2016)
#1 SPOT AMERICANS ARE MOVING TO
RIGHT NOW
(REALTOR.COM, 2016)
#3 MOST COST-FRIENDLY BUSINESS
LOCATION AMONG LARGE U.S. CITIES
(KPMG, 2016)

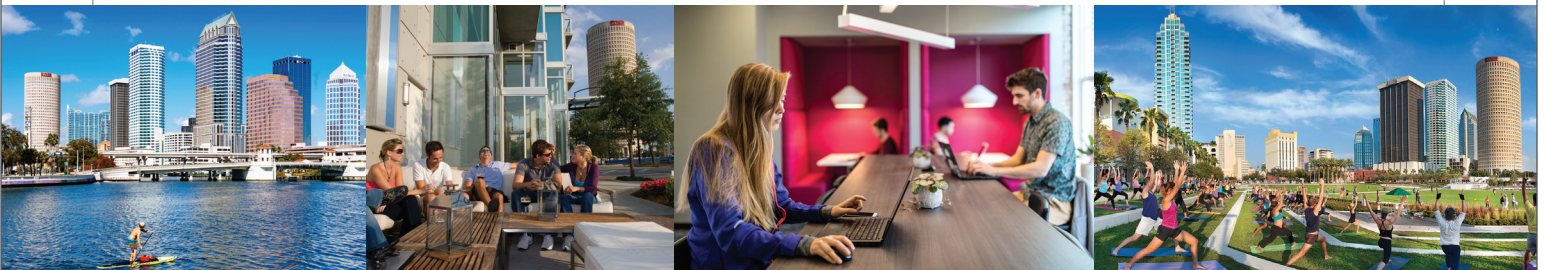
CONNECTIVITY



Hillsborough County is home to the top-rated Tampa International Airport (TPA), located just 15 minutes from downtown Tampa. Approximately 19 million people are served by major air carriers each year at TPA on more than 250 daily flights. TPA offers over 80 nonstop flights to domestic and international destinations.

Port Tampa Bay is the largest and most diversified port in Florida, with more than 5,000 acres of land and handling over 37 million tons of cargo every year. As the closest full-service port to the Panama Canal, Port Tampa Bay opens up exporting opportunities to Latin America and Asia.

Tampa and Hillsborough County are connected to the entire United States by roads and rail as well. Interstate systems I-4, I-75, and I-275 link the region to numerous major U.S. cities and more than 33 million consumers within an eight-hour drive.



TAMPA HILLSBOROUGH ECONOMIC DEVELOPMENT CORPORATION



For more information on the IT industry in Tampa and Hillsborough County, please contact Steve Morey, Vice President, Business Development, at (813) 518-2630 or smorey@tampaedc.com

Tampa Hillsborough Economic Development Corporation is the lead designated economic development agency for Hillsborough County and the cities of Tampa, Plant City, and Temple Terrace. Established in 2009 as a partnership between the public sector and private corporate investors, the EDC works to develop and sustain a thriving local economy through the attraction, retention, and expansion of high wage jobs and capital investment within targeted industry sectors.