

LIFE SCIENCES

INDUSTRY OVERVIEW



Tampa Bay has emerged as a driving force behind the state's fast-growing life sciences industry, with the presence of industry leaders such as Amgen, Bristol-Myers Squibb, and Johnson & Johnson.

In recent years, globally renowned corporations, such as Bristol-Myers Squibb and Johnson & Johnson, have chosen Tampa as the site for major North American operations. They joined a stellar list of life sciences companies in the area, including Quest Diagnostics, Medtronic, Synergy Health, LifeLink, and Capsugel. Hillsborough County's talented workforce, strong university presence, pro-business climate, and quality of life have made it easier than ever to locate and expand a life sciences company here.

The Tampa Bay region is gaining a global reputation as a growing hub for research and development. USF Health, University of Tampa College for Natural & Health Sciences, and Hillsborough Community College Health Sciences and Nursing programs all contribute to the region's research and innovation capabilities and train the next generation of scientists, doctors, and technicians.

"We saw this as an opportunity for us to gain experience in an area where we could be a life science employer of choice."

**- LEE EVANS, HEAD OF
BRISTOL-MYERS SQUIBB'S
NORTH AMERICA CAPABILITY
CENTER & GLOBAL CAPABILITY
CENTER OPERATIONS**

TAMPA BAY'S LEADING LIFE SCIENCES COMPANIES

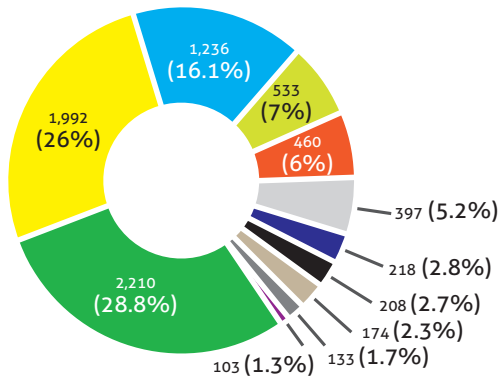


Amgen
Bausch + Lomb
Baxter
BioVest International
Bovie Medical Corporation
Bristol-Myers Squibb

Capsugel
CONMED
Medtronic
Johnson & Johnson
Inspirata
Laser Spine Institute

LifeLink
Lions Eye Institute
M2Gen
Moffitt Cancer Center
Quest Diagnostics

LIFE SCIENCES INDUSTRY OCCUPATION TOTAL 2017 JOBS



- Radiologic Technologists
- Medical and Clinical Laboratory Technologists
- Operations Research Analyst
- Chemists
- Magnetic Resonance Imaging Technologists
- Environmental Engineers
- Biomedical Engineers
- Statisticians
- Biochemists and Biophysicists
- Microbiologists
- Physicists

AVERAGE WAGE BY LIFE SCIENCE OCCUPATION

| SOC CODE | OCCUPATION | AVERAGE WAGE | |
|----------|---|--------------|-----------|
| | | TAMPA MSA | U.S. |
| 15-2041 | Statisticians | \$68,500 | \$85,200 |
| 19-1021 | Biochemists and Biophysicists | \$68,200 | \$94,300 |
| 19-1012 | Physicists | \$107,100 | \$121,800 |
| 19-2031 | Chemists | \$63,700 | \$80,800 |
| 19-1022 | Microbiologists | \$65,400 | \$76,900 |
| 29-2011 | Medical and Clinical Laboratory Technologists | \$61,200 | \$62,400 |
| 17-2031 | Biomedical Engineers | \$71,600 | \$90,000 |
| 29-2035 | Magnetic Resonance Imaging Technologists | \$66,800 | \$69,200 |
| 29-2034 | Radiologic Technologists | \$52,700 | \$59,300 |
| 15-2031 | Operations Research Analyst | \$68,500 | \$84,300 |
| 17-2081 | Environmental Engineers | \$70,200 | \$88,500 |

Source: JobsEQ®, 2017 Q2.

REGIONAL ASSETS

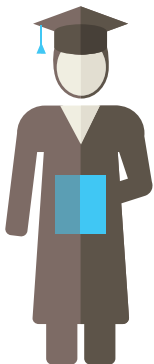
!P:POTENTIAL UNLEASHED

[BAYCARE](#)
[BIOFLORIDA](#)
[CENTER FOR ADVANCED MEDICAL LEARNING AND SIMULATION \(CAMLS\)](#)
[FLORIDA HOSPITAL](#)
[FLORIDA INNOVATION AND EDUCATION \(FIVE\) LABS](#)
[FLORIDA MEDICAL MANUFACTURERS CONSORTIUM \(FMMC\)](#)
[LIONS EYE INSTITUTE FOR TRANSPLANT & RESEARCH](#)

M2GEN

[MOFFITT CANCER CENTER](#)
[SHRINER'S HOSPITAL FOR CHILDREN](#)
[ST. JOSEPH'S HOSPITAL](#)
[TAMPA BAY TECHNOLOGY INCUBATOR](#)
[TAMPA GENERAL HOSPITAL](#)
[USF CONNECT](#)
[USF RESEARCH PARK](#)

TOTAL FLORIDA DEGREES AWARDED BY LEVEL



Bachelor's
104,805

Post Graduate
43,210

Source: National Center for Education Statistics (NCES), 2014-2015

TAMPA MSA LIFE SCIENCES DATA

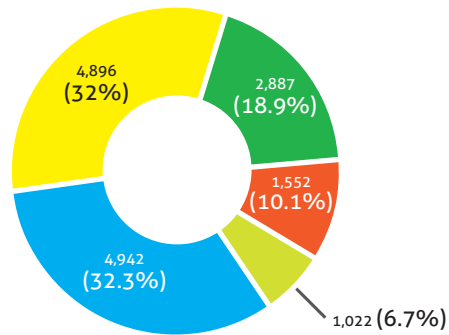
\$67,798 AVERAGE
ANNUAL WAGES

43,000 EMPLOYEES

853 COMPANIES

Source: JobsEQ®, 2016

LIFE SCIENCES INDUSTRY SECTORS TOTAL 2017 JOBS



- Medical Equipment and Supplies Manufacturing
- Medical Diagnostic Laboratories
- Scientific Research and Development Services
- Pharmaceutical and Medicine Manufacturing
- Testing Laboratories

AVERAGE WAGE BY LIFE SCIENCE SECTORS

| NAICS CODE | SECTORS | AVERAGE WAGE TAMPA MSA | U.S. |
|------------|--|------------------------|-----------|
| 3254 | Pharmaceutical and Medicine Manufacturing | \$64,896 | \$115,695 |
| 3391 | Medical Equipment and Supplies Manufacturing | \$59,599 | \$71,106 |
| 6215 | Medical Diagnostic Laboratories | \$56,059 | \$60,918 |
| 541380 | Testing Laboratories | \$58,020 | \$73,266 |
| 5417 | Scientific Research and Development Services | \$75,358 | \$122,532 |

Source: JobsEO®, 2017 Q2.

“We couldn’t be happier with the talent we’ve found in Tampa Bay. It’s been a great market for us.”

- MICHAEL FRANKEL, EXECUTIVE DIRECTOR, GLOBAL BUSINESS SOLUTIONS, AMGEN

INDUSTRY HIGHLIGHTS



In early 2017, **AMGEN** announced plans to locate its Capability Center in Tampa, adding 450 new jobs. The global biotechnology leader occupies 136,000 square feet in the Westshore district.



JOHNSON & JOHNSON opened its North American shared services headquarters in Tampa in 2016, creating 500 new high wage jobs. The shared services HQ is designed to handle work in the areas of finance, human resources, IT, and procurement.



BRISTOL-MYERS SQUIBB decided to locate its North America Capability Center in Tampa in 2013, opening the center one year later with 250 employees. They went on to add up to 325 additional jobs to support scientific and technical activities by the life sciences giant.



The top cancer hospital in Florida and one of only 41 National Cancer Institute-designated Comprehensive Cancer Centers

MOFFITT CANCER CENTER is approaching cancer treatment differently. Its Total Cancer Care model combines elements of personalized medicine and access to clinical trials with traditional care.



A spin-off of Moffitt Cancer Center, **M2GEN** delivers health informatics solutions to predict and meet patient needs. M2GEN led creation of the world’s largest repository of cancer-focused clinical and molecular data.



Located downtown, the **CENTER FOR ADVANCED MEDICAL LEARNING AND SIMULATION (CAMLS)** is on the fast track for becoming a national model for improving medical training and patient safety through the use of technology.

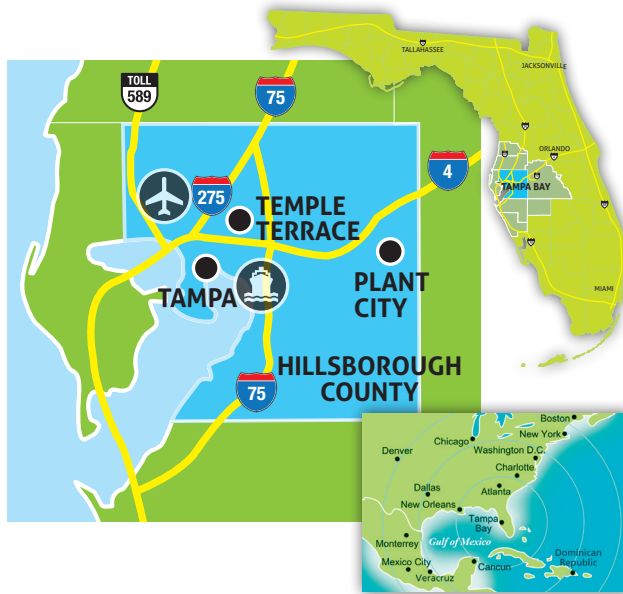
DEMOGRAPHICS

TOTAL MSA POPULATION: **3M**
TOTAL MSA LABOR FORCE: **1.5M**
MEDIAN AGE: **37**
COLLEGE DEGREE HOLDERS: **31%**
COST OF LIVING INDEX: **94.8** (2017)

RANKINGS

#1 CITY FOR FIRST TIME HOME BUYERS
(ZILLOW, 2018)
#1 BEST STATES IN THE NATION FOR
HIGHER EDUCATION
(U.S. NEWS & WORLD REPORT, 2018)
#2 BEST STATES FOR BUSINESS
(CHIEF EXECUTIVE MAGAZINE, 2017)

CONNECTIVITY



Hillsborough County is home to the top-rated Tampa International Airport (TPA), located just 15 minutes from downtown Tampa. Approximately 19 million people are served by major air carriers each year at TPA on more than 250 daily flights. TPA offers over 80 nonstop flights to domestic and international destinations.

Port Tampa Bay is the largest and most diversified port in Florida, with more than 5,000 acres of land and handling over 37 million tons of cargo every year. As the closest full-service port to the Panama Canal, Port Tampa Bay opens up exporting opportunities to Latin America and Asia.

Tampa and Hillsborough County are connected to the entire United States by roads and rail as well. Interstate systems I-4, I-75, and I-275 link the region to numerous major U.S. cities and more than 33 million consumers within an eight-hour drive.



TAMPA HILLSBOROUGH ECONOMIC DEVELOPMENT CORPORATION



For more information on the life sciences industry in Tampa and Hillsborough County, please contact Steve Morey, Vice President, Business Development, at (813) 518-2630 or smorey@

Tampa Hillsborough Economic Development Corporation is the lead designated economic development agency for Hillsborough County and the cities of Tampa, Plant City, and Temple Terrace. Established in 2009 as a partnership between the public sector and private corporate investors, the EDC works to develop and sustain a thriving local economy through the attraction, retention, and expansion of high wage jobs and capital investment within targeted industry sectors.