

MANUFACTURING

INDUSTRY OVERVIEW



Manufacturing has a long history in Tampa Bay, where it is a source of innovation for a wide range of industries.

The region has the second largest base of manufacturing employment in Florida with more than 2,800 other manufacturing firms employing more than 63,000 people. From precise military specifications to the creation and development of medical devices and manufacturing in highly regulated industries, our businesses are advancing modern manufacturing technology and making an impact across the globe. Recently, Advanced Airfoil Components, a joint venture of Siemens and Chromalloy Gas Turbine Corporation, announced plans to open operations in Hillsborough County.

Tampa Bay's manufacturing sector also plays a key role in attracting investment from overseas. Close to 500 foreign-owned companies representing more than 40 nations have established successful operations here.

“When the Gavio Group bought Bertram, they saw a new vision for the company. And that’s where the Tampa facility is really unmatched in the United States. We felt that this location was the best for our upscale clientele and the skills we were looking for.”

**- PETER TRUSLOW, CEO,
BERTRAM YACHTS**

TAMPA BAY'S LEADING MANUFACTURING SERVICES COMPANIES

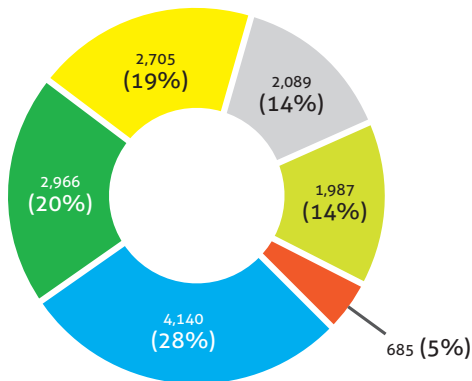


Acoustiblok
Advanced Airfoil
Components
Amalie Oil Company
Bausch + Lomb
Pharmaceuticals
Bertram Yachts

Chromalloy Castings
CONMED
Cott Beverages
Covidien
Gerdau
Jabil
James Hardie

Lidworks
Masonite
Metrohm
Mosaic
Steelco
Tampa Tank and Florida
Structural Steel

MANUFACTURING OCCUPATION TOTAL 2017 JOBS



- First-Line Supervisors of Production and Operating Workers
- Inspectors, Testers, Sorters, Samplers, and Weighers
- Electrical and Electronic Equipment Assemblers
- Packaging and Filling Machine Operators and Tenders
- Machinists
- Structural Metal Fabricators and Fitters

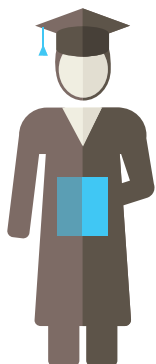
AVERAGE WAGE BY MANUFACTURING OCCUPATION

SOC CODE	OCCUPATION	AVERAGE WAGE TAMPA MSA	U.S.
51-1011	First-Line Supervisors of Production and Operating Workers	\$55,900	\$61,500
51-2022	Electrical and Electronics Equipment Assemblers	\$33,800	\$33,700
51-2041	Structural Metal Fabricators and Fitters	\$41,600	\$40,000
51-4011	Computer Controlled Machine Tool Operators, Metal & Plastic	\$34,300	\$39,600
51-4021	Extruding/Drawing Machine Setters, Operators, Tenders, Metal & Plst	\$32,000	\$35,300
51-4041	Machinists	\$40,400	\$43,200
51-4111	Tool and Die Makers	\$51,900	\$51,600
51-4122	Welding, Soldering, Brazing Machine Setters, Operators and Tenders	\$33,800	\$38,400
51-9061	Inspectors, Testers, Sorters, Samplers, and Weighers	\$35,900	\$40,300
51-9111	Packaging and Filling Machine Operators and Tenders	\$27,500	\$30,900

Source: JobsEQ®, 2017 Q2.



TOTAL FLORIDA DEGREES AWARDED BY LEVEL



Bachelor's
104,805

Post Graduate
43,210

Source: National Center for Education Statistics (NCES), 2014-2015

TAMPA MSA MANUFACTURING DATA

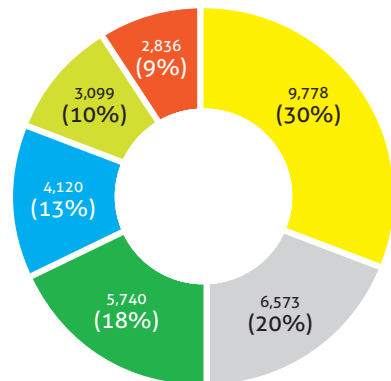
\$56,761 **AVERAGE**
ANNUAL WAGES

63,693 **EMPLOYEES**

2,886 **COMPANIES**

Source: JobsEQ®, 2016

MANUFACTURING INDUSTRY SECTORS TOTAL 2017 JOBS



- Computer and Electronic Product Manufacturing
- Fabricated Metal Product Manufacturing
- Machinery Manufacturing
- Food Manufacturing
- Electrical Equipment, Appliance, and Component Manufacturing
- Plastics and Rubber Products Manufacturing

AVERAGE WAGE BY MANUFACTURING INDUSTRY SECTOR

SOC CODE	INDUSTRY SECTOR	AVERAGE WAGE	
		TAMPA MSA	U.S.
311111 - 311999	Food Manufacturing	\$38,854	\$45,664
331110	Iron and Steel Mills Ferroalloy Manufacturing	\$52,048	\$78,786
325111 - 326299	Plastics and Rubber Products Manufacturing	\$49,435	\$51,550
332111 - 332999	Fabricated Metal Product Manufacturing	\$49,524	\$54,527
333111 - 333999	Machinery Manufacturing	\$59,005	\$67,254
334111 - 334614	Computer and Electronic Product Manufacturing	\$82,912	\$113,654
335110 - 335999	Electrical Equipment, Appliance, and Component Manufacturing	\$53,440	\$64,962
336611	Ship Building and Repair	\$55,319	\$70,853
312111 - 312140	Beverage Manufacturing	\$60,978	\$51,225
325412	Pharmaceutical Preparation Manufacturing	\$67,372	\$119,948

Source: JobsEQ®, 2017 Q2.

RESOURCES



BAY AREA MANUFACTURERS ASSOCIATION (BAMA)

www.bama-fl.org

BAMA provides a forum to exchange ideas and share best practice information, network with colleagues, and learn about manufacturing related topics through educational programs and tours. Additionally, BAMA supports the development of young talent by offering scholarships to students pursuing manufacturing and STEM education.



FLORIDA HIGH TECH CORRIDOR

www.floridahightech.com

Florida High Tech Corridor is a technology rich region with a mission to grow high tech industry and innovation through partnerships that support research, marketing, workforce, and entrepreneurship. The Florida High Tech Corridor Council is an economic development initiative of three of the country's largest research institutions: University of South Florida, University of Central Florida, and University of Florida.



MANUFACTURERS ASSOCIATION OF FLORIDA (MAF)

www.mafmfg.com

MAF is a trade association comprised of manufacturers, manufacturing organizations, and associated businesses. The organization was organized in early 2006 to improve Florida's manufacturing business climate.



MANUFACTURING ALLIANCE OF HILLSBOROUGH COUNTY

www.madeinhillsborough.org

The Manufacturing Alliance of Hillsborough County fuels the growth and longevity of the local manufacturing sector. The alliance aims to cultivate the next generation of workers and leaders, to help businesses access talent and resources, and to help Hillsborough County flourish as a vital manufacturing hub today and well into the future.

DEMOGRAPHICS

TOTAL MSA POPULATION: **3M**
TOTAL MSA LABOR FORCE: **1.5M**
MEDIAN AGE: **37**
COLLEGE DEGREE HOLDERS: **31%**
COST OF LIVING INDEX: **91.5** (2016)

RANKINGS

#1 STATE FOR BEST BUSINESS CLIMATE
(BUSINESS FACILITIES, 2016)
#1 SPOT AMERICANS ARE MOVING TO
RIGHT NOW
(REALTOR.COM, 2016)
#3 MOST COST-FRIENDLY BUSINESS
LOCATION AMONG LARGE U.S. CITIES
(KPMG, 2016)

CONNECTIVITY



Hillsborough County is home to the top-rated Tampa International Airport (TPA), located just 15 minutes from downtown Tampa. Approximately 19 million people are served by major air carriers each year at TPA on more than 250 daily flights. TPA offers over 80 nonstop flights to domestic and international destinations.

Port Tampa Bay is the largest and most diversified port in Florida, with more than 5,000 acres of land and handling over 37 million tons of cargo every year. As the closest full-service port to the Panama Canal, Port Tampa Bay opens up exporting opportunities to Latin America and Asia.

Tampa and Hillsborough County are connected to the entire United States by roads and rail as well. Interstate systems I-4, I-75, and I-275 link the region to numerous major U.S. cities and more than 33 million consumers within an eight-hour drive.



TAMPA HILLSBOROUGH ECONOMIC DEVELOPMENT CORPORATION



For more information on the manufacturing industry in Tampa and Hillsborough County, please contact Steve Morey, Vice President, Business Development, at (813) 518-2630 or smorey@tampaedc.com

Tampa Hillsborough Economic Development Corporation is the lead designated economic development agency for Hillsborough County and the cities of Tampa, Plant City, and Temple Terrace. Established in 2009 as a partnership between the public sector and private corporate investors, the EDC works to develop and sustain a thriving local economy through the attraction, retention, and expansion of high wage jobs and capital investment within targeted industry sectors.